

What is Groundwater?

Groundwater is the water that fills the small spaces between rock particles (sand, gravel, etc.) or cracks in solid rock. Rain, melting snow, or surface water becomes groundwater by seeping into the ground and filling these spaces. The top of the water-saturated zone is called the “*water table*.”

When water seeps in from the surface and reaches the water table, it begins moving towards points where it can escape, such as wells, rivers, or lakes.

An *aquifer* is any type of geologic material, such as sand or sandstone, which can supply water wells or springs.

The groundwater, which supplies wells, often comes from within a short distance (a few miles) of the well. How fast groundwater moves depends on how much the well is pumped and what type of rock particles or bedrock it is moving through.



What were the steps the city took to develop a Wellhead Protection Plan?

1. Formed a community planning team.
2. Identified the land area to be protected.
3. Identified land uses and possible sources of pollution in the sourcewater protection area and determined how vulnerable the sourcewater protection area is to pollution.
4. Implemented ways to prevent groundwater pollution.
5. Developed an alternate way to supply water.

What Can You Do?

To protect local groundwater:

- Recognize and manage possible sources of contamination on your property.
- Use hazardous products as directed and dispose of them properly.
- Conserve water.



Where Does Your *DRINKING WATER* Come From?



The City of Cosmos

Has developed a *SOURCEWATER PROTECTION PLAN*

In cooperation with
Minnesota Department of Health
&
Minnesota Rural Water Association
Source Water Protection Program

For Further Information Contact:
Cosmos City Hall
(320) 877-7345



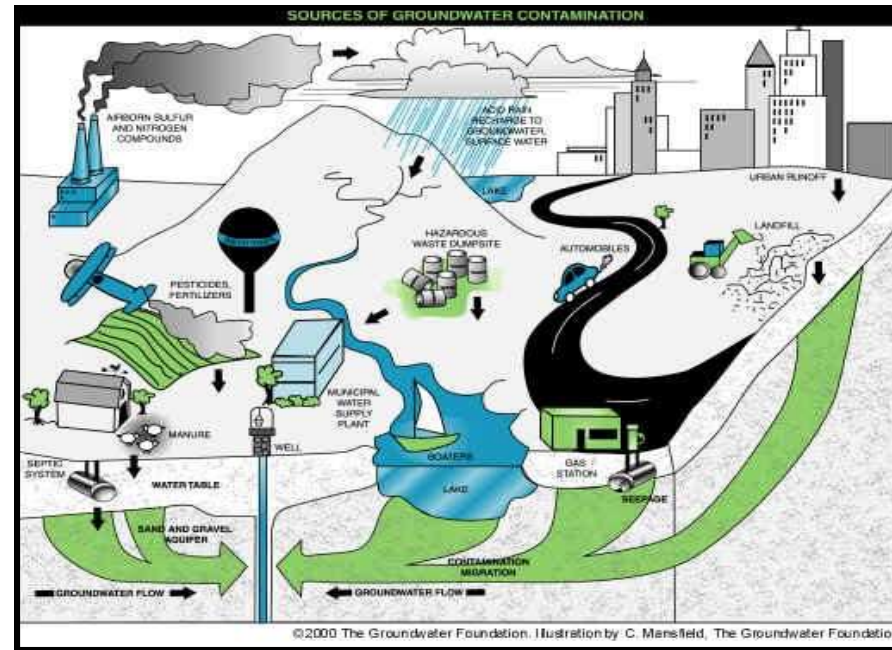
A community effort to protect public wells...

The City of Cosmos relies on groundwater for their drinking water supply. The City owns and operates wells that draw water from groundwater aquifers located several hundred feet underground. Groundwater aquifers are vulnerable to contamination from human land surface activities.



The City of Cosmos is working with their citizens to protect drinking water supplies by carrying out a Sourcewater Protection plan. This plan has been prepared in conjunction with several local, county and state agencies. The Minnesota Department of Health (MDH) is the lead agency for the State's program and will assist communities with defining sourcewater protection areas and developing plans to protect wells. Minnesota Rural Water Association, in cooperation with the MDH provides technical assistance to public water suppliers to help meet the system's sourcewater protection goals.

For more sourcewater protection information, contact the MN Rural Water Association at (800) 367-6792.



Most Minnesotans get drinking water from wells

Sourcewater Protection is a way to prevent drinking water from becoming polluted by managing possible sources of contamination in the area which supplies water to a public well. Sourcewater Protection will be an ongoing need for communities. Everyone has an important part to play in protecting drinking water wells—today and for the future. Become involved the implementation of the city's SOURCEWATER PROTECTION PLAN. Contact one of the listed agencies for additional information, or call the Cosmos City Hall.

How do wells become polluted?

Wells become polluted when substances that are harmful to human health get into the groundwater. Water from these wells can be dangerous to drink when the level of pollution rises above health standards. Many of our everyday activities can cause pollution. Much can be done to prevent pollution, such as wise use of land and chemicals. The expense of treating polluted water or drilling new wells can also be avoided. Help avoid drinking water contamination by being an environmentally aware citizen.